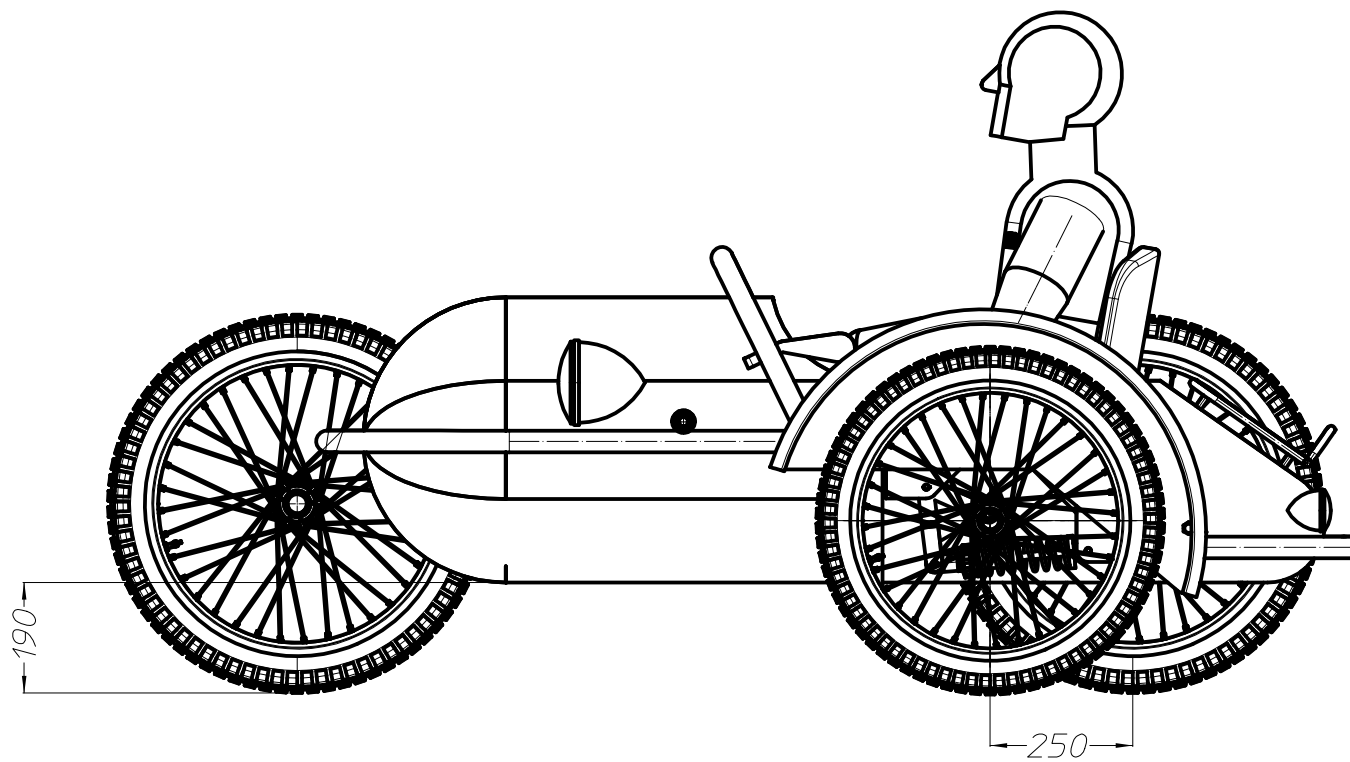
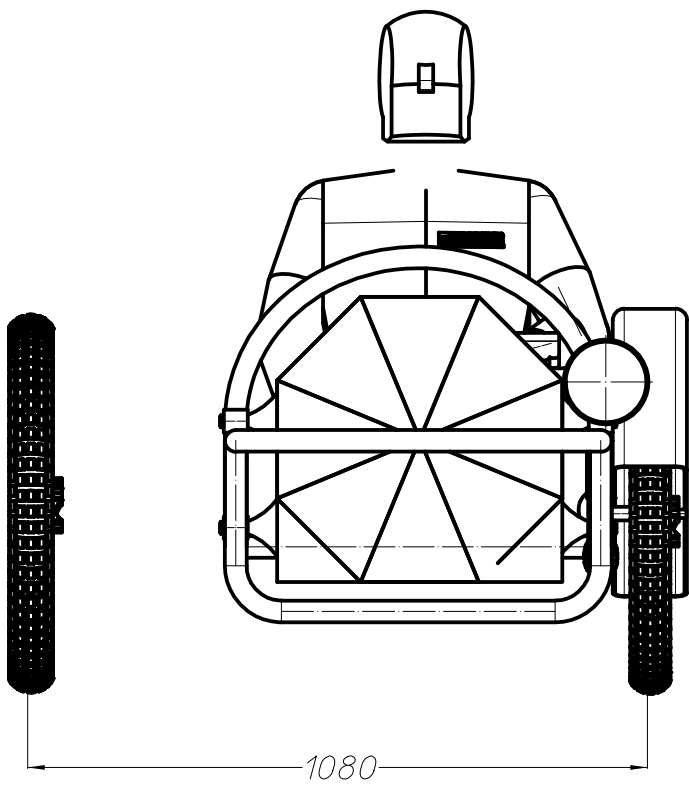
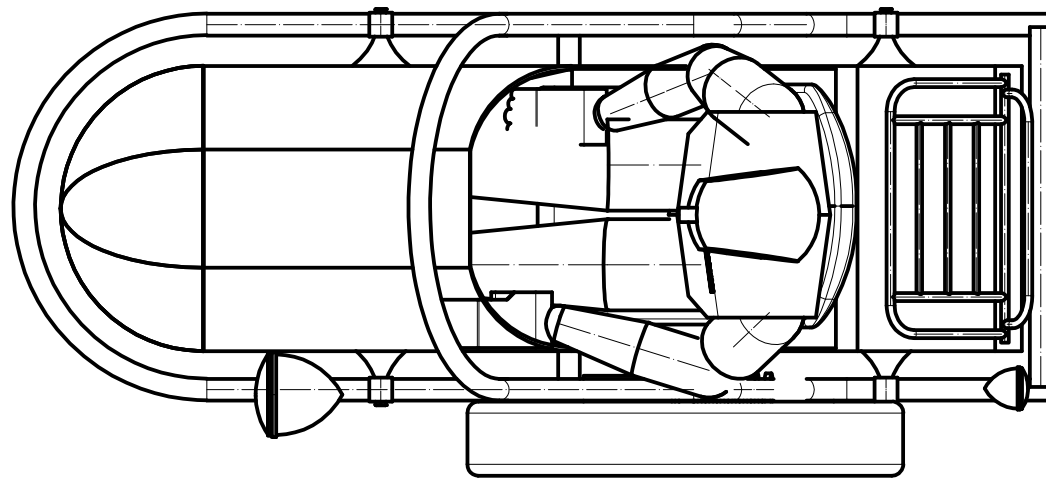
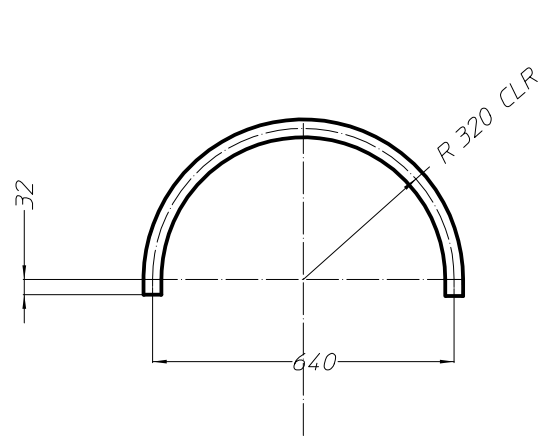
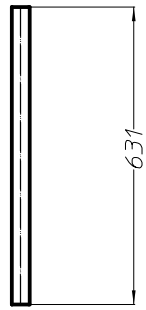
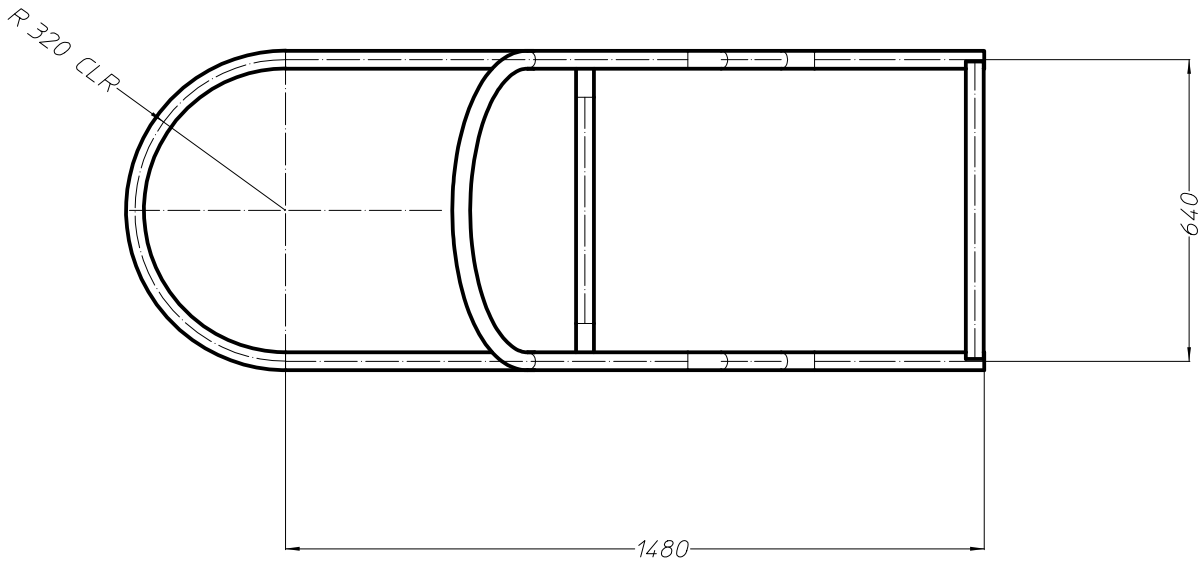


SIDECAR MKIII OVERALL DIMENSIONS



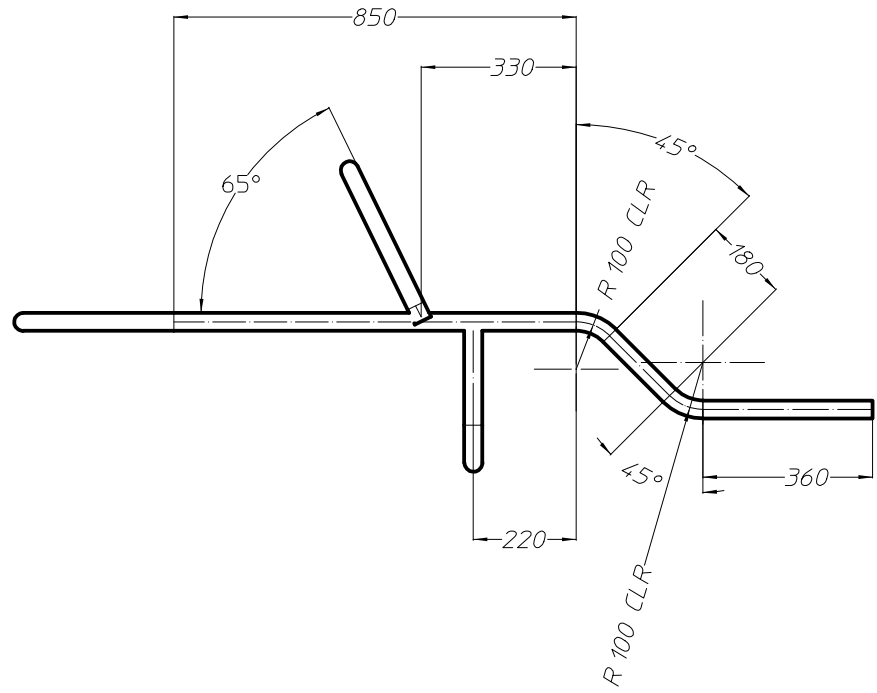
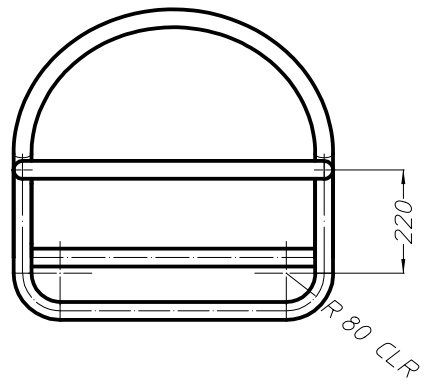


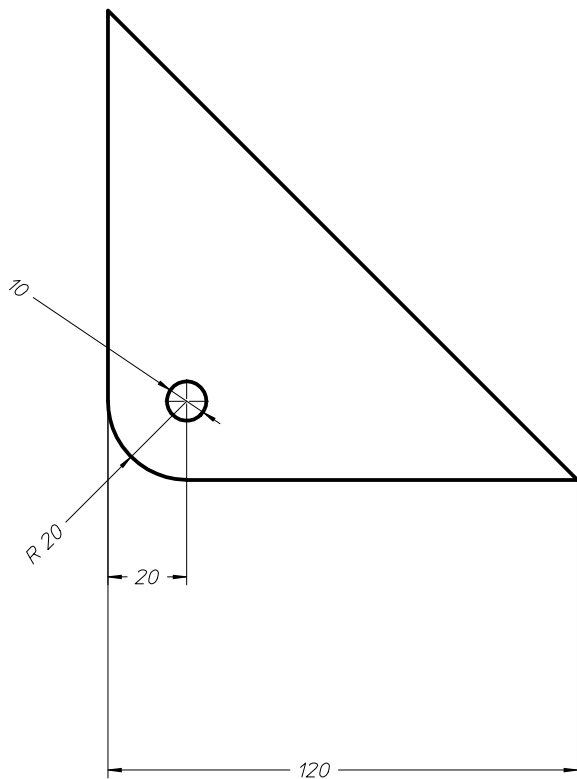
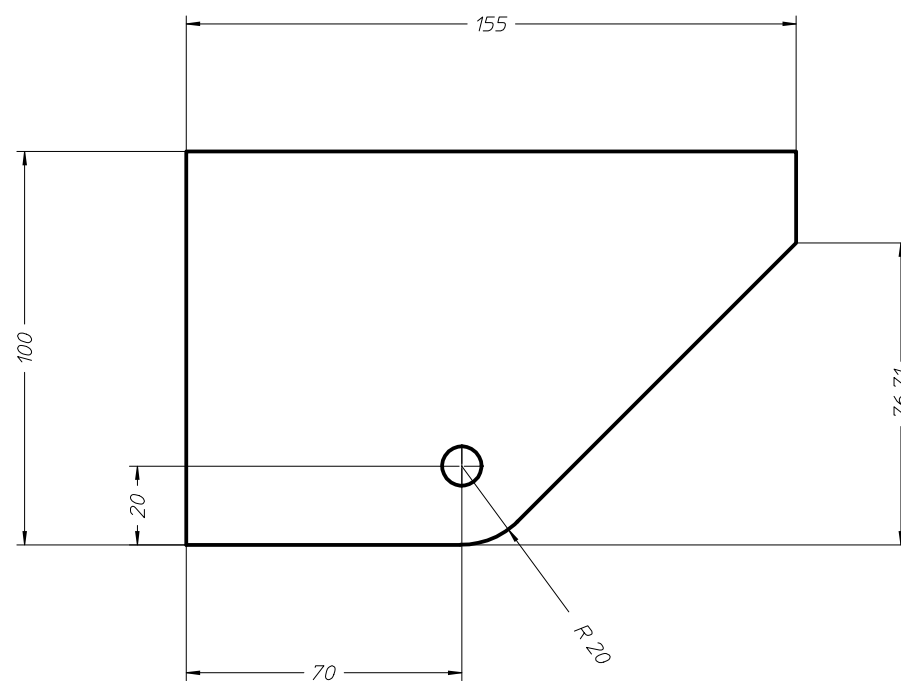
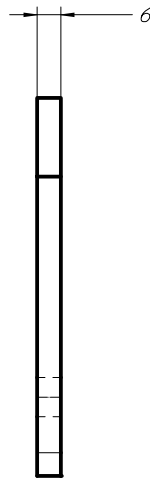
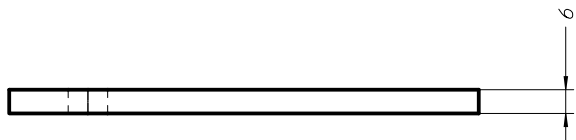
HANDLE



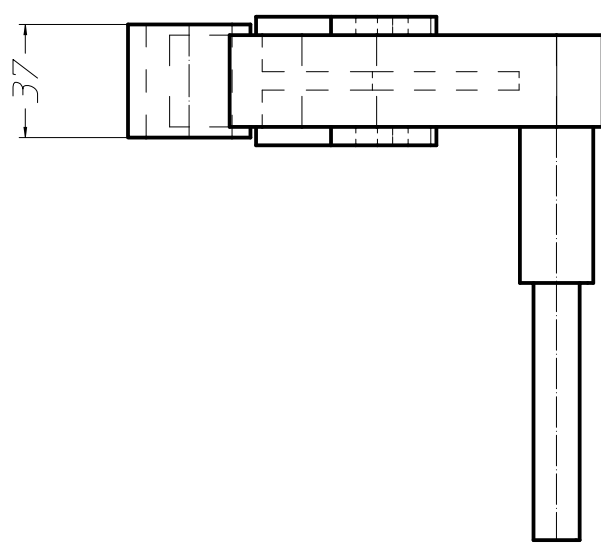
BUMPER

SIDECAR FRAME MKIII
 MATERIAL 38MM DIAMETER STEEL TUBE
 2MM WALL THICKNESS



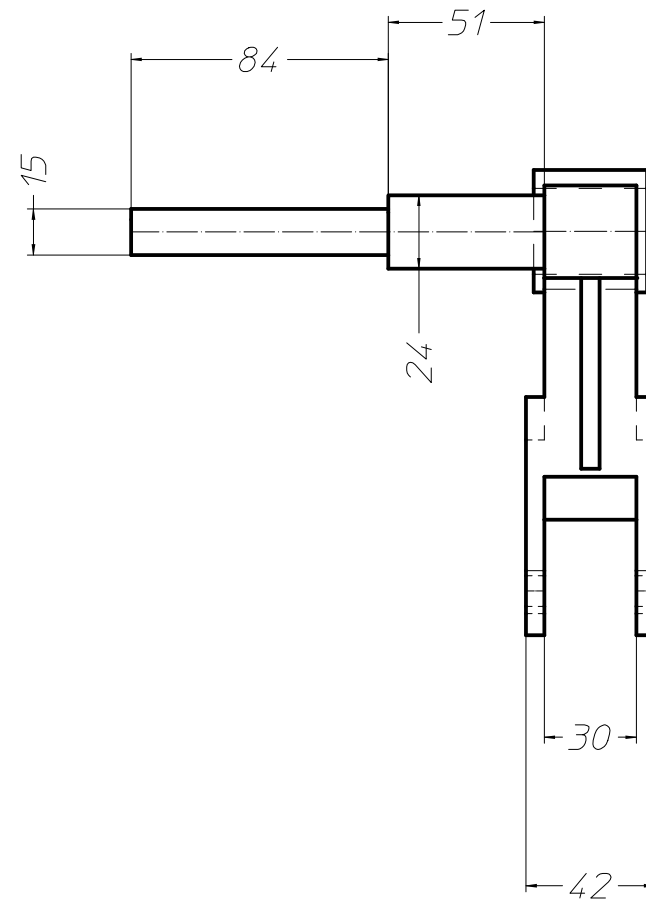
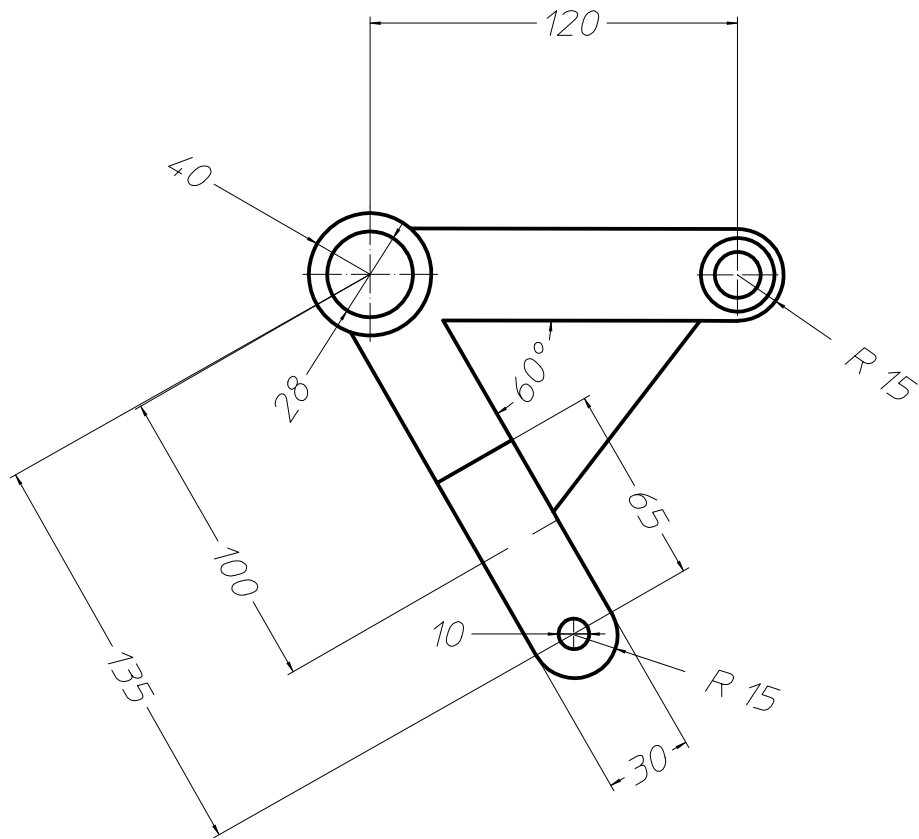


SIDECAR SUSPENSION MOUNTING PLATES
2 OF EACH REQUIRED
MATERIAL 6MM THICK STEEL PLATE.



SIDECAR SWINGING ARM MKIII

MATERIAL 6MM STEEL PLATE PARTS
AND
30MM X30MM X 3MM STEEL BOX SECTION

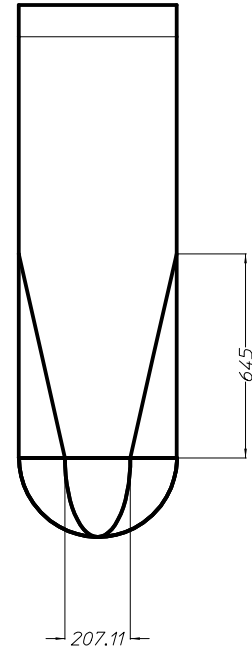
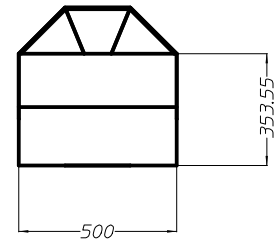
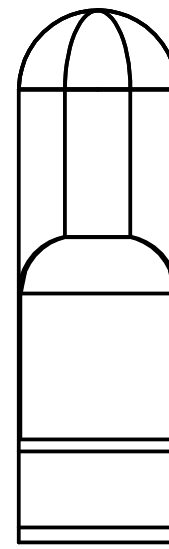
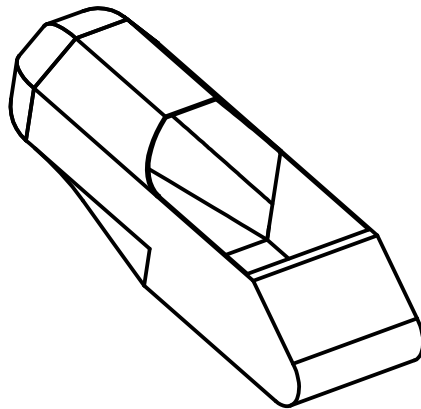
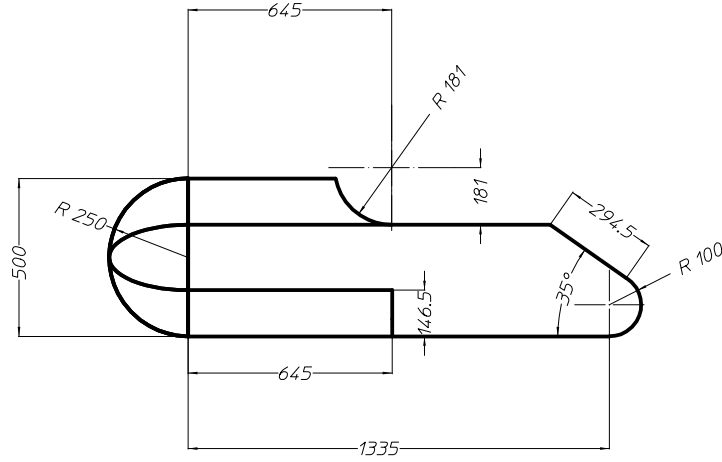
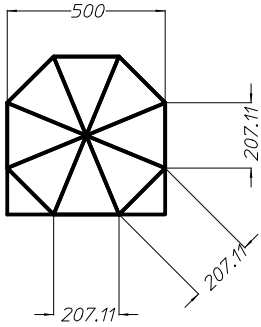
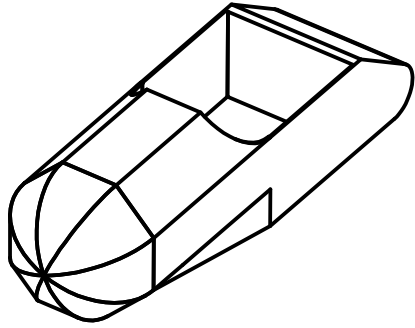


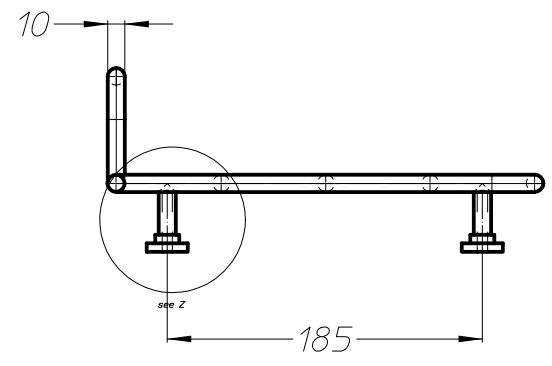
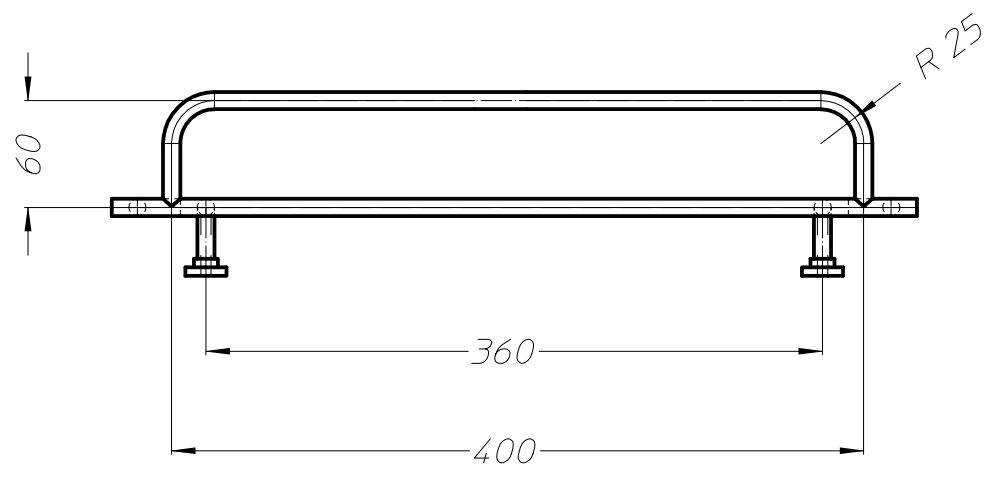
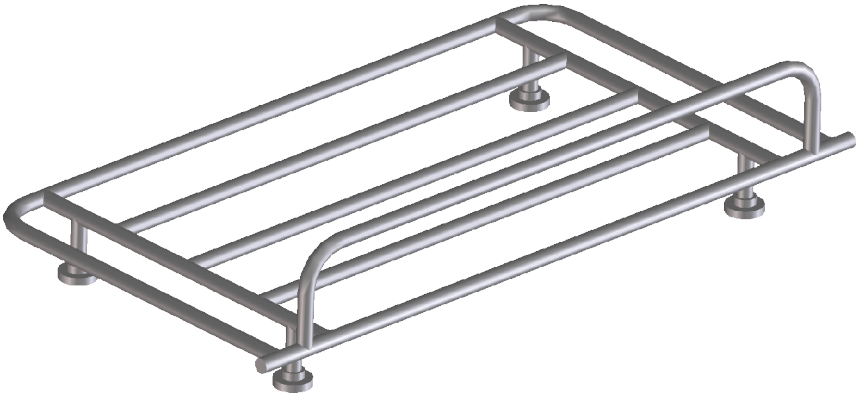
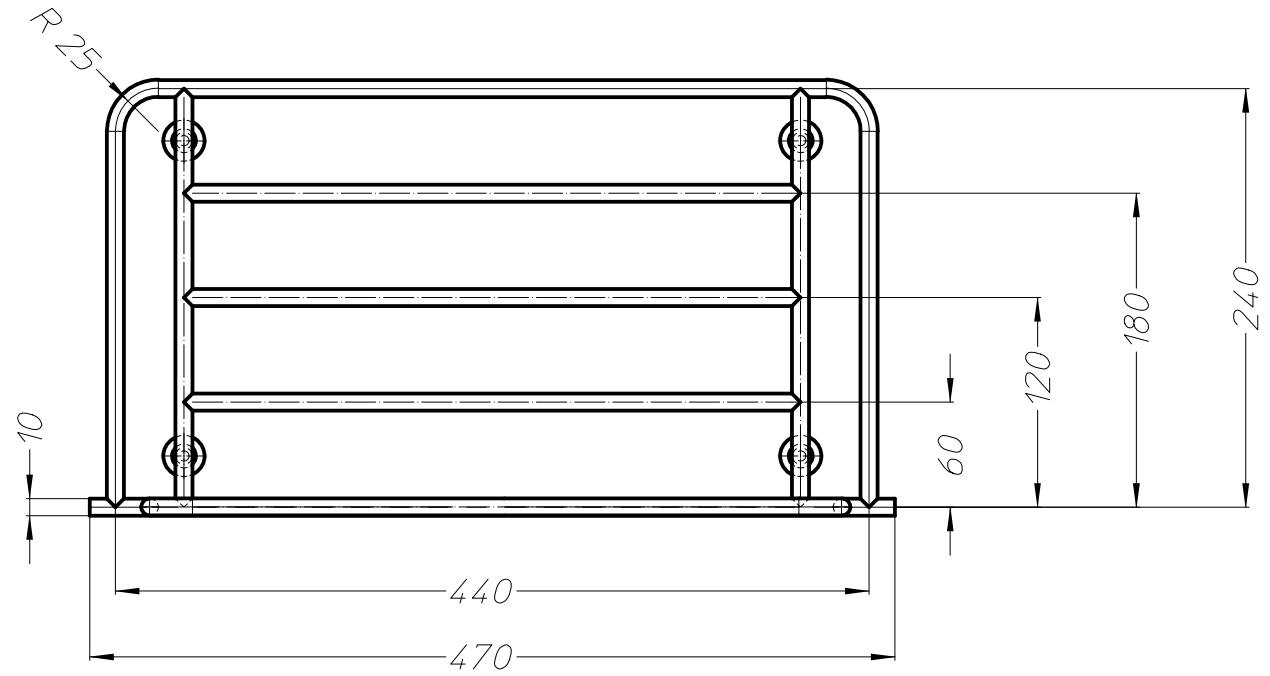
MKIII MOTORCYCLE SIDECAR

FINISHED PROJECTIONS

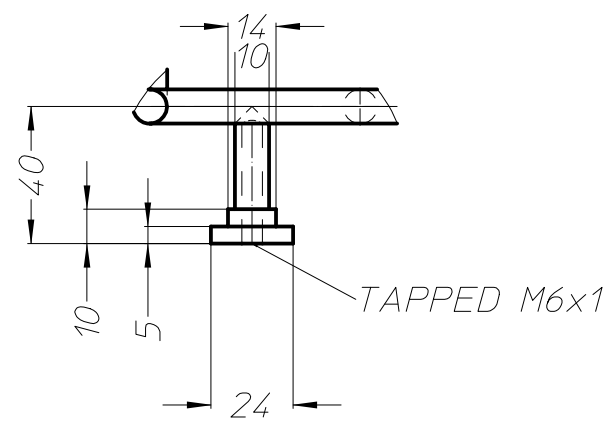
DIMENSIONS IN MM's

1.5mm ALUMINIUM

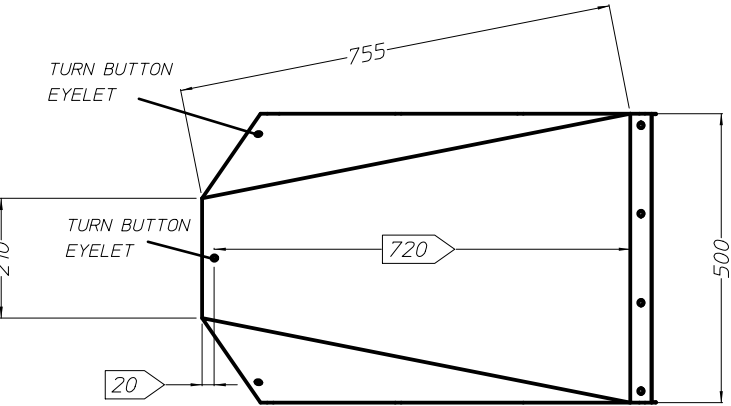




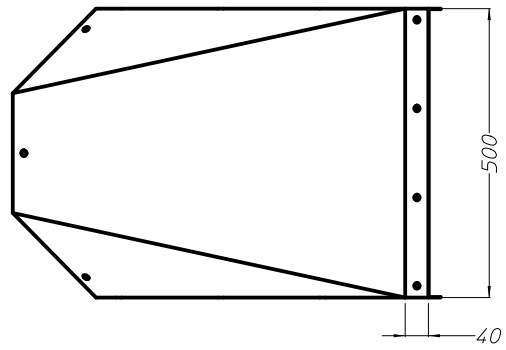
FOOT DETAIL



TOP PANEL DETAIL



BACK PANEL DETAIL



SIDECAR CABIN COVER REV2

MATERIAL : BLACK PVC

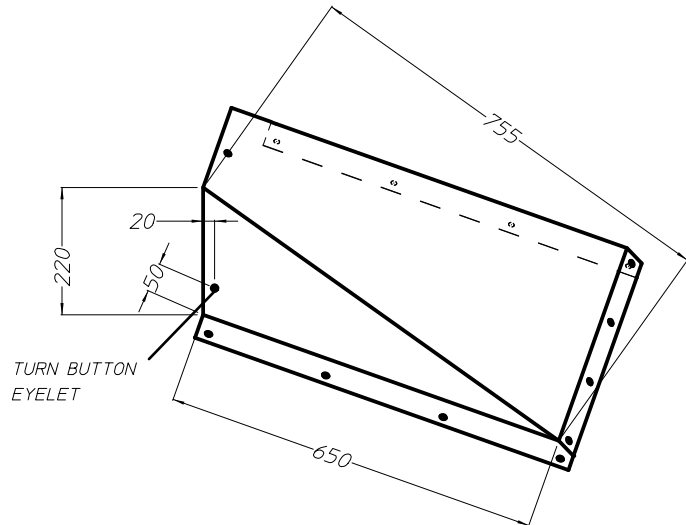
CRITICAL DIMENSIONS BOXED

SIDE AND REAR FITTED WITH SOLID BRASS EYELETS FOR BUNGEE CORD (12 OFF)

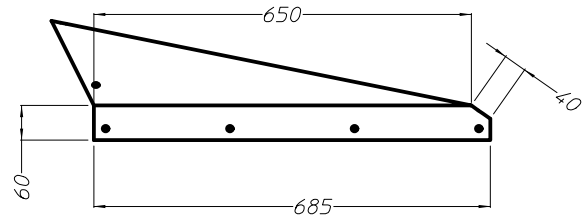
FRONT MOUNTINGS ARE FOR TURN BUTTON FIXINGS (3 OFF)

26th JAN 2015

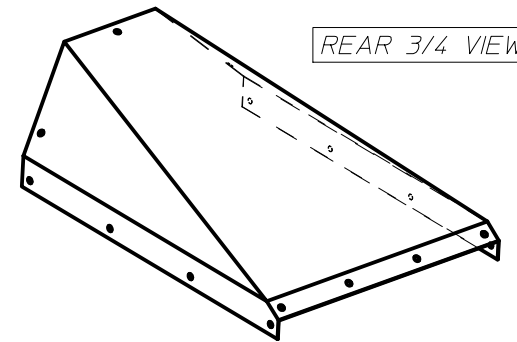
QUARTER PANEL DETAIL



SIDE PANEL DETAIL



REAR 3/4 VIEW



FRONT UNDERSIDE VIEW

